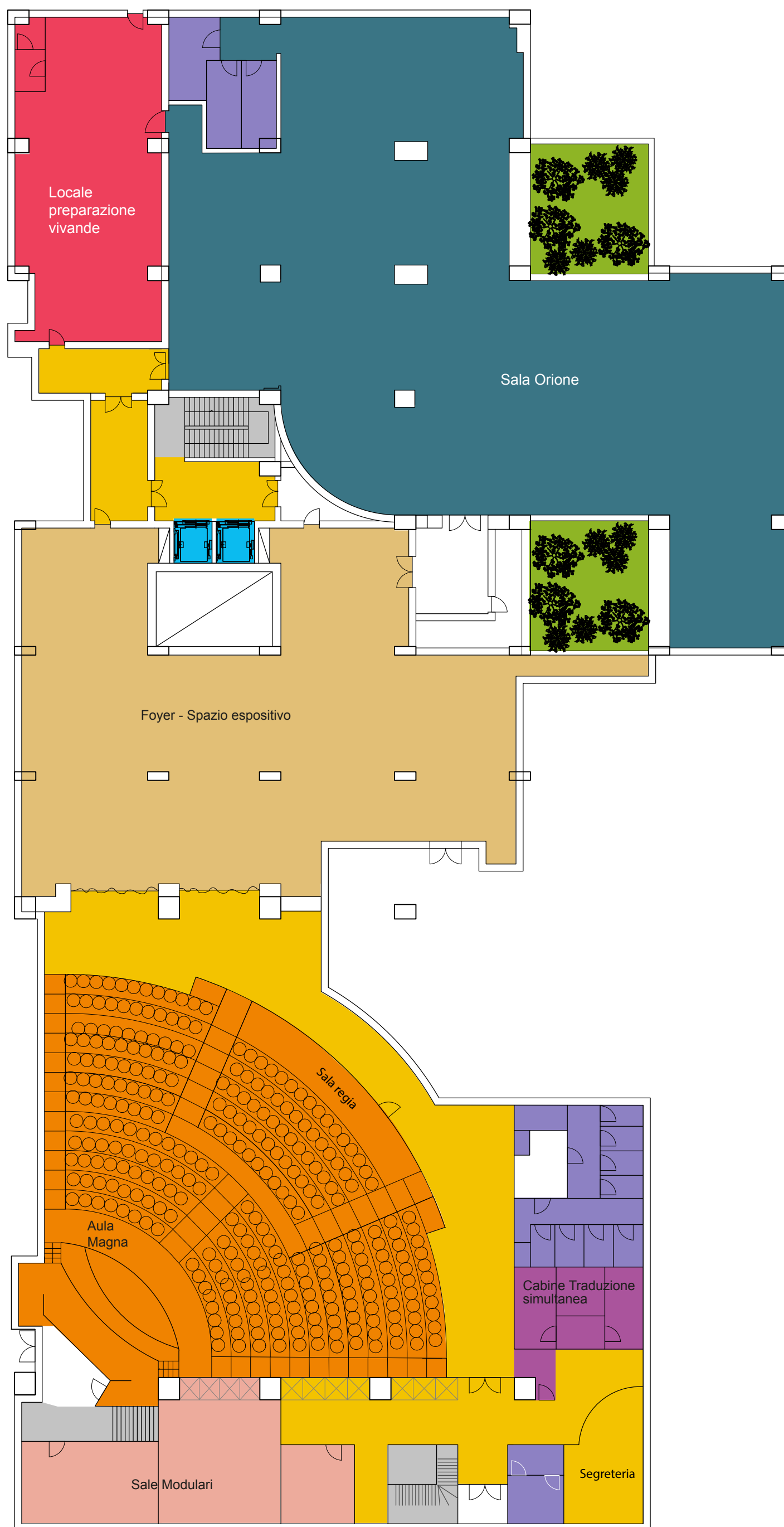


# Centro Congressi Auditorium Aurelia / PIANO -2



0 1 2 4m

- |  |   |   |
|--|---|---|
| <span style="color: orange;">●</span> <b>AULA MAGNA</b><br>280 posti ad anfiteatro | <span style="color: purple;">●</span> <b>CABINE TRADUZIONE<br/>SIMULTANEA</b> | <span style="color: grey;">●</span> <b>SCALE</b>      |
| <span style="color: tan;">●</span> <b>FOYER - SPAZIO ESPOSITIVO / 300 mq</b>       | <span style="color: lightpurple;">●</span> <b>TOILETTE</b>                    | <span style="color: yellow;">●</span> <b>CORRIDOI</b> |
| <span style="color: teal;">●</span> <b>SALA ORIONE / 450 mq</b>                    | <span style="color: pink;">●</span> <b>SALE MODULARI</b>                      | <span style="color: cyan;">●</span> <b>ASCENSORI</b>  |
| <span style="color: red;">●</span> <b>LOCALE PREPARAZIONE VIVANDE</b>              |   |   |

# Centro Congressi Auditorium Aurelia / PIANO I



● SALA VEGA / 125 mq  
100 posti

● CORRIDOIO

● SCALE

● SALA CONSILIARE / 114 mq  
30 posti

● ASCENSORI

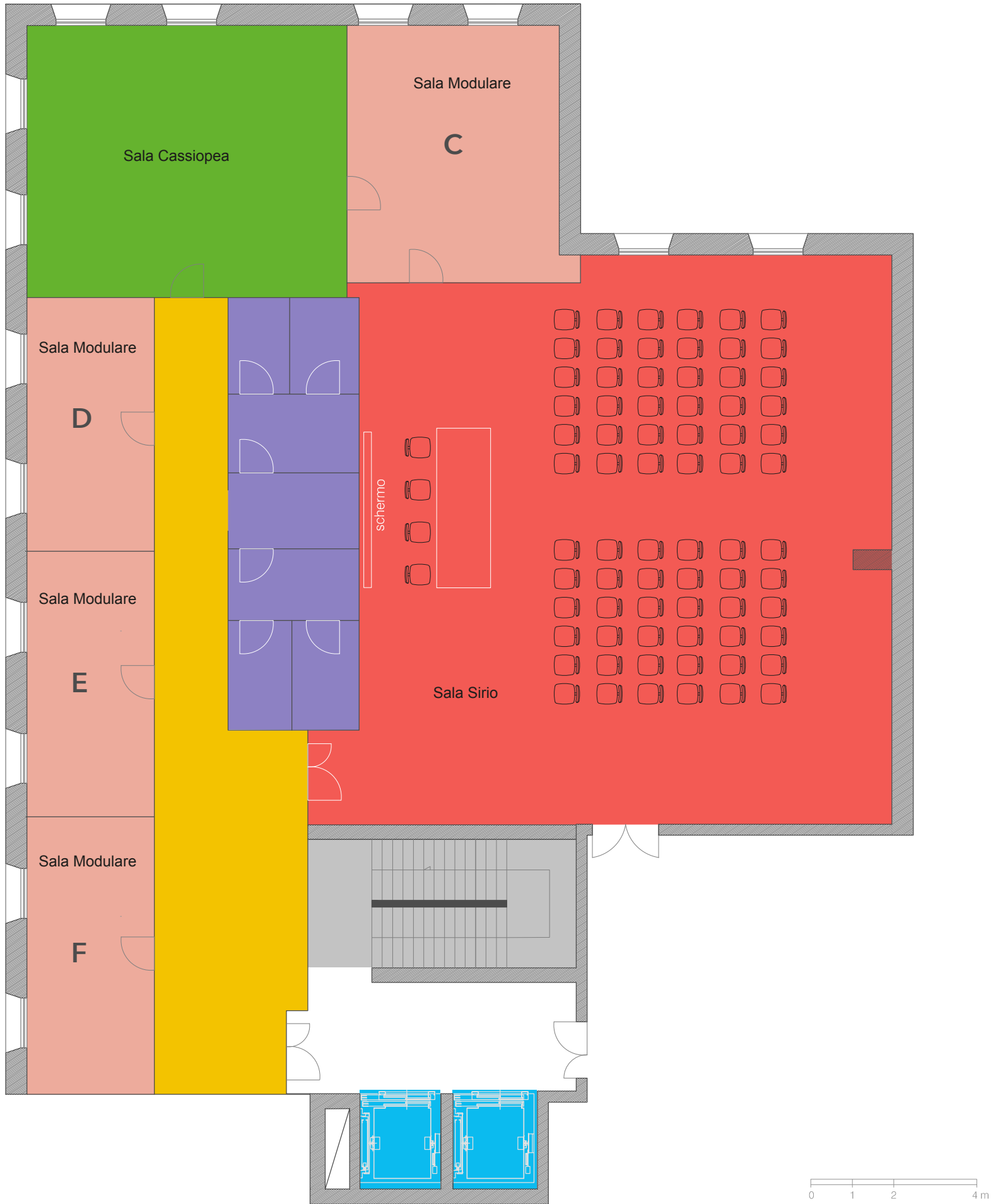
● CABINA REGIA

● SALE MODULARI  
A - 18 mq  
B - 18 mq

● TOILETTE

● CABINA TRADUZIONE  
SIMULTANEA

# Centro Congressi Auditorium Aurelia / PIANO II



● SALA SIRIO / 125 mq  
100 posti

● CORRIDOIO

● SCALE

● SALA CASSIOPEA / 38,60 mq  
20 posti

● ASCENSORI

● SALE MODULARI  
C 25 mq  
D 15 mq  
E 15 mq  
F 15 mq

● TOILETTE